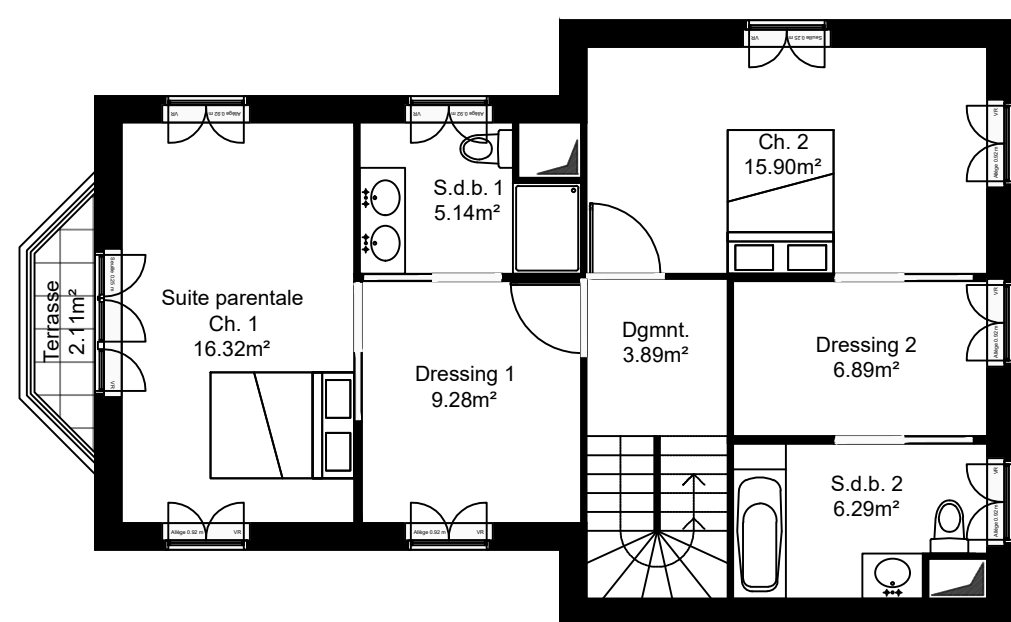
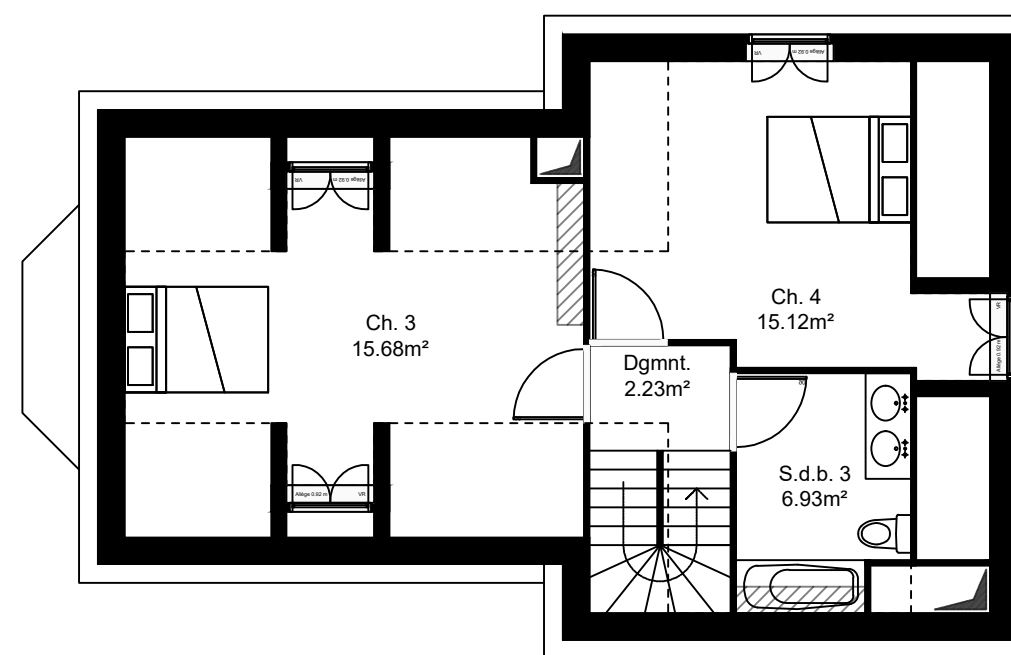


Maison 2: 6 pièces

| RDC | |
|-----------------------|-----------------------|
| Entrée | 10.38 m ² |
| Bureau | 8.81 m ² |
| Cuisine | 5.91 m ² |
| Séjour | 34.57 m ² |
| Buanderie | 5.15 m ² |
| W.C. | 3.37 m ² |
| Surface habitable RDC | 68.19 m ² |
| Garage | 18.20 m ² |
| Terrasse | 21.00 m ² |
| Jardin | 350.74 m ² |



Plan du R+1

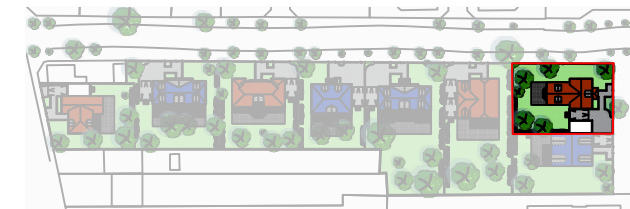


Plan du R+2

| R+1 | |
|-----------------------|----------------------|
| Dégagement | 3.89 m ² |
| Dressing 1 | 9.28 m ² |
| Suite parentale | 16.32 m ² |
| Salle de bain 1 | 5.14 m ² |
| Chambre 2 | 15.90 m ² |
| Dressing 2 | 6.89 m ² |
| Salle de bain 2 | 6.29 m ² |
| Surface habitable R+1 | 63.71 m ² |
| Terrasse | 2.11 m ² |

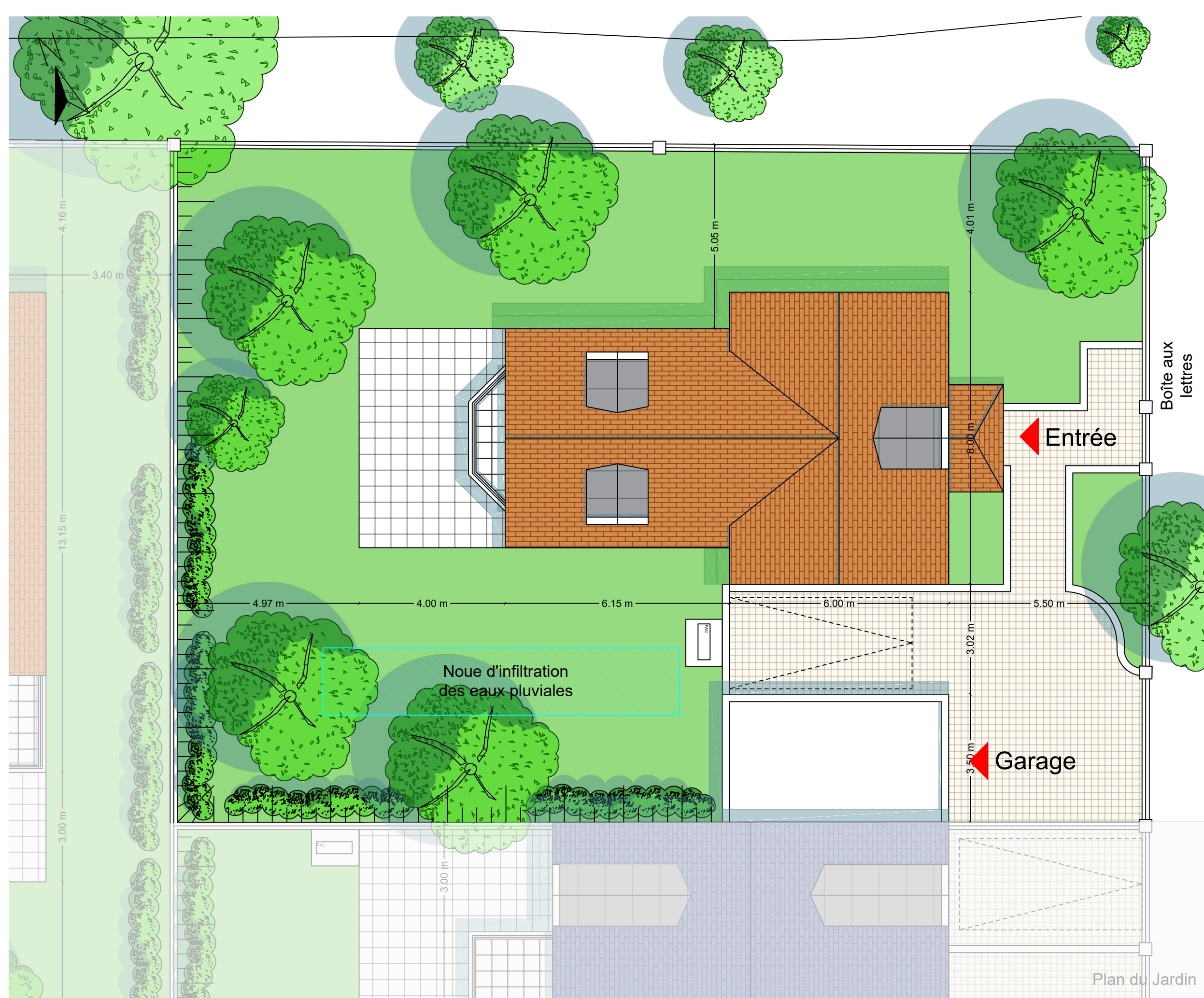
| R+2 | |
|-----------------------|----------------------|
| Dégagement | 2.23 m ² |
| Chambre 3 | 15.68 m ² |
| Chambre 4 | 15.12 m ² |
| Salle de bain 3 | 6.93 m ² |
| Surface habitable R+2 | 39.96 m ² |

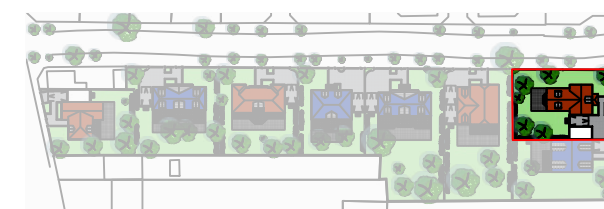
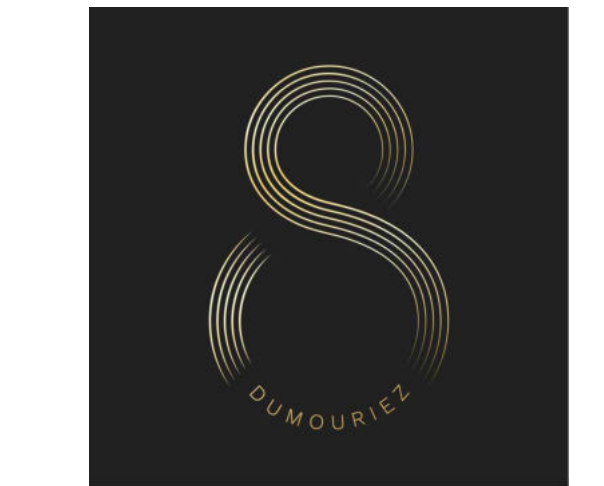
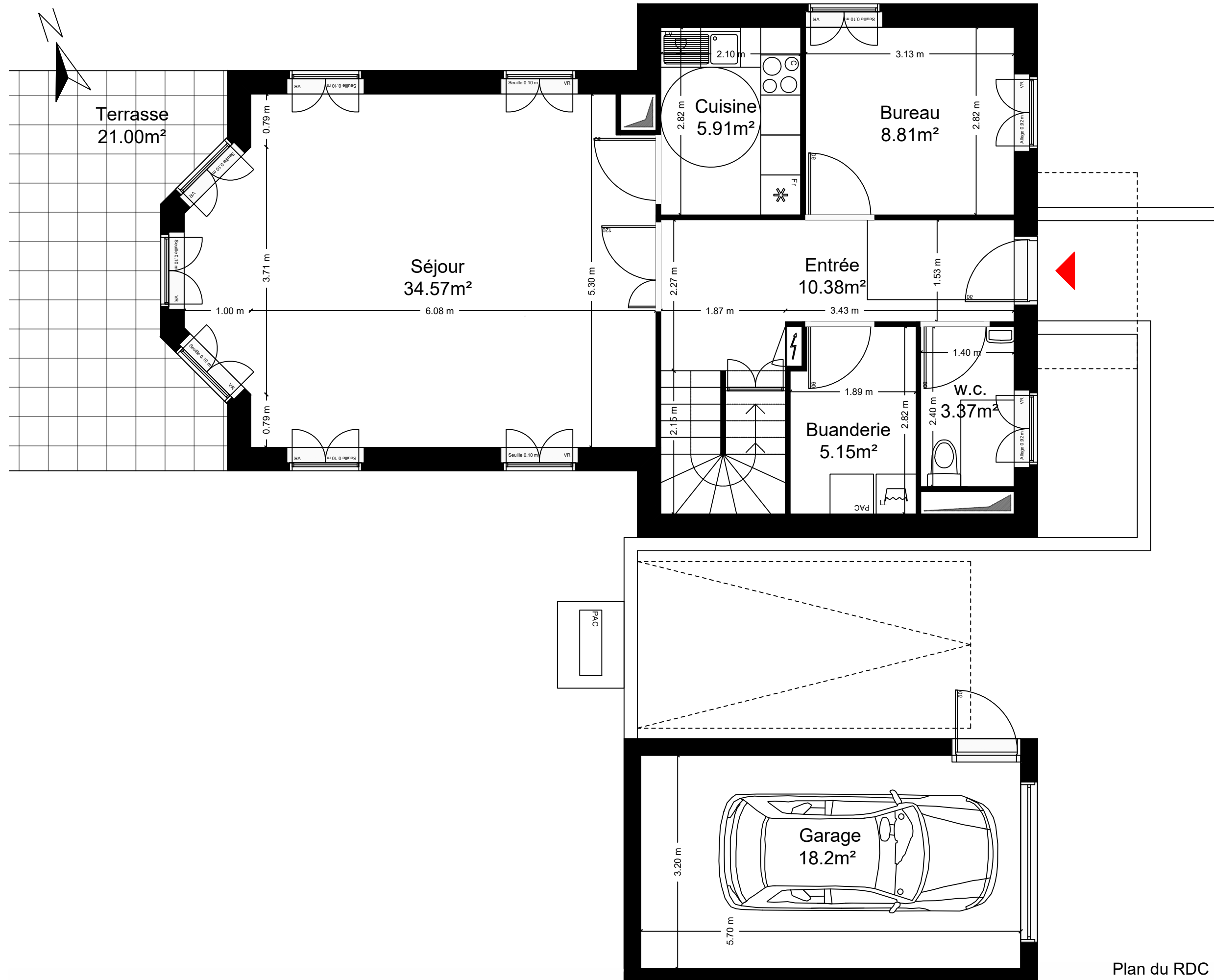
| Total | |
|-------------------|-----------------------|
| Surface habitable | 171.86 m ² |
| Garage | 18.20 m ² |
| Terrasse | 2.11 m ² |
| Terrasse RdJ | 21.00 m ² |
| Jardin | 350.74 m ² |



Maison 2: 6 pièces

| | |
|--------------|-----------------------|
| Terrasse RdJ | 21.00 m ² |
| Jardin | 350.74 m ² |

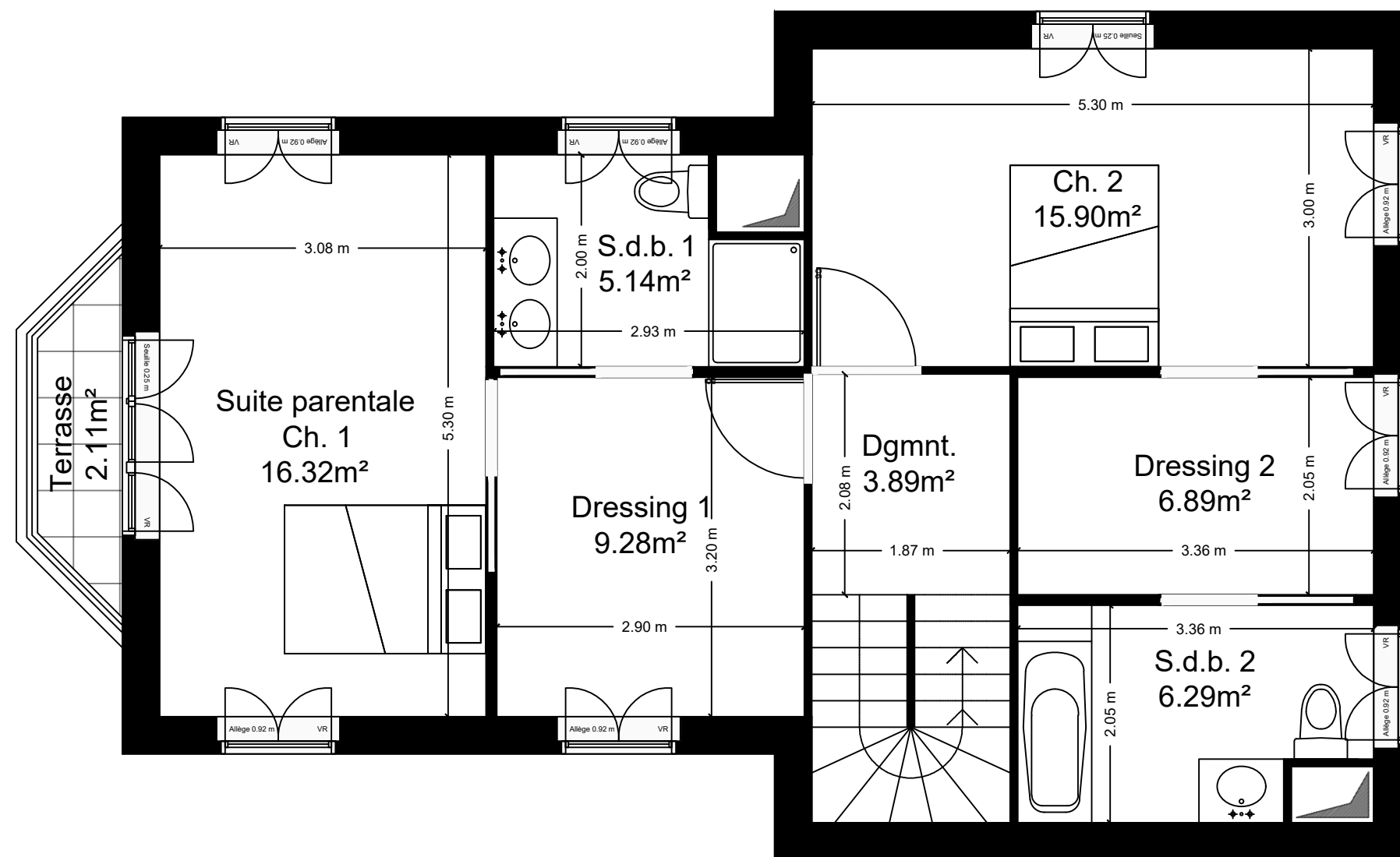
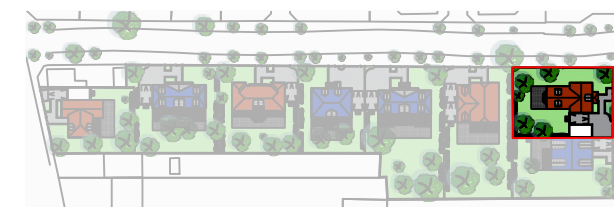
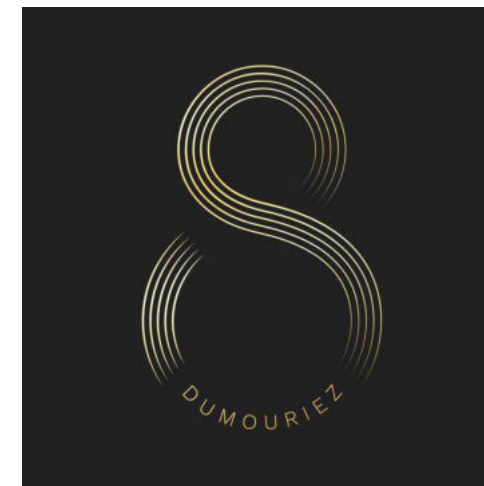




Maison 2: 6 pièces

| RDC | |
|-----------------------|-----------------------|
| Entrée | 10.38 m ² |
| Bureau | 8.81 m ² |
| Cuisine | 5.91 m ² |
| Séjour | 34.57 m ² |
| Buanderie | 5.15 m ² |
| W.C. | 3.37 m ² |
| Surface habitable RDC | 68.19 m ² |
| Garage | 18.20 m ² |
| Terrasse RdJ | 21.00 m ² |
| Jardin | 350.74 m ² |

Plan du RDC



Maison 2: 6 pièces

| R+1 | |
|-----------------------|----------------------|
| Dégagement | 3.89 m ² |
| Dressing 1 | 9.28 m ² |
| Suite parentale | 16.32 m ² |
| Salle de bain 1 | 5.14 m ² |
| Chambre 2 | 15.90 m ² |
| Dressing 2 | 6.89 m ² |
| Salle de bain 2 | 6.29 m ² |
| Surface habitable R+1 | 63.71 m ² |
| Terrasse | 2.11 m ² |

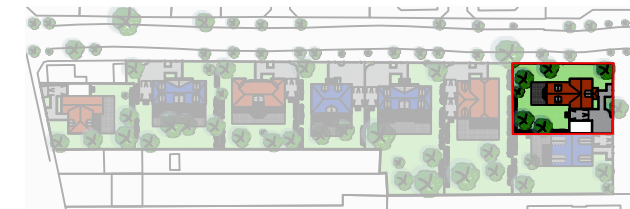
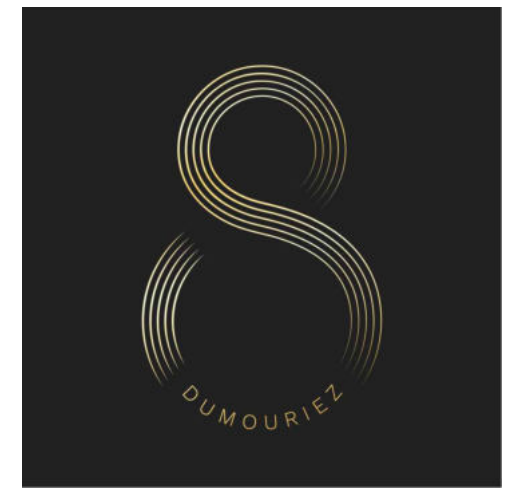
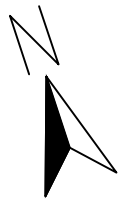
Plan du R+1

Date:
25/01/23
Indice:

Mentions :

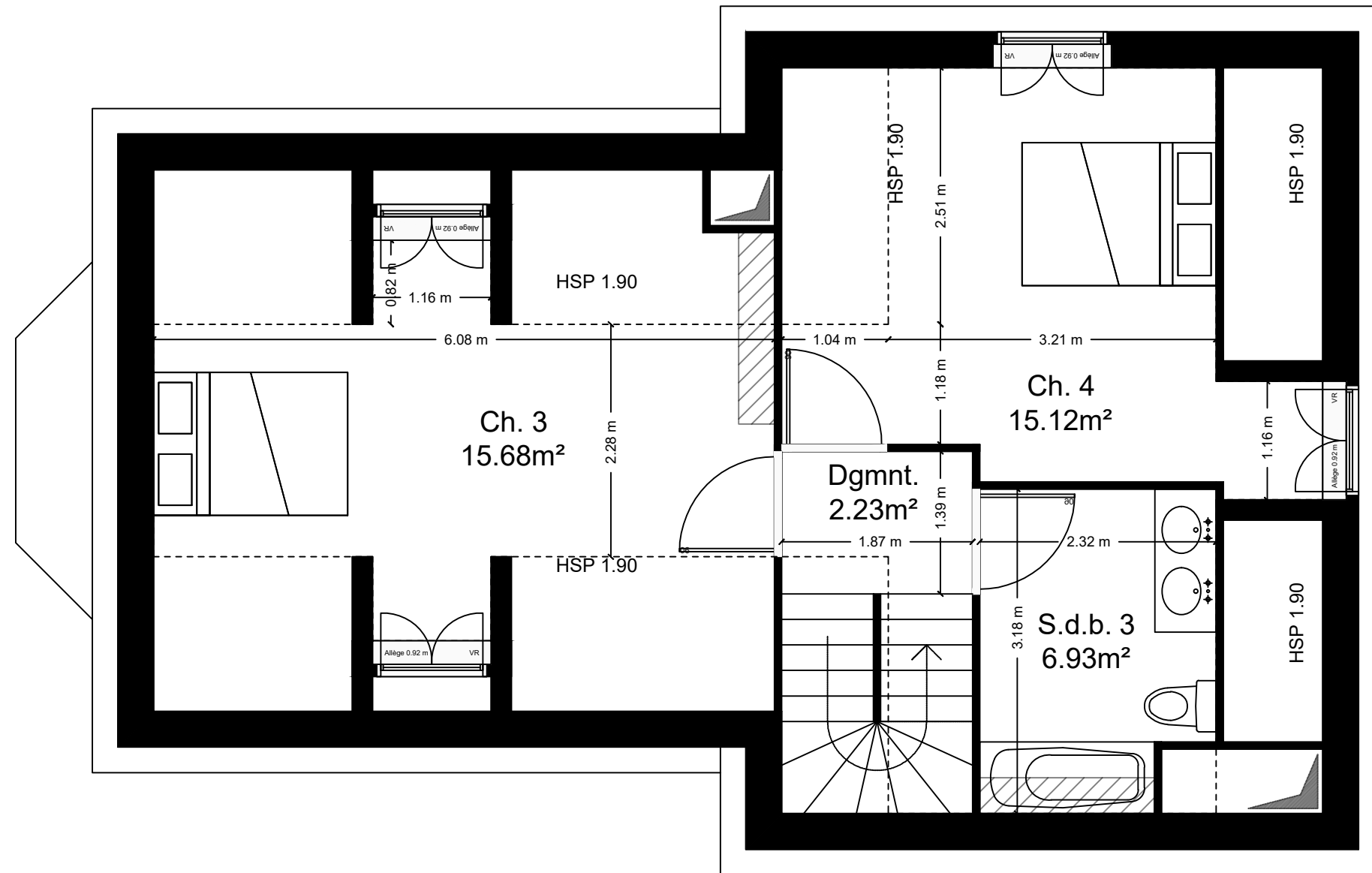


DOMINIQUE
HERTZENBERGER
ARCHITECTE



Maison 2: 6 pièces

| R+2 | |
|------------------------------|----------------------------|
| Dégagement | 2.23 m ² |
| Chambre 3 | 15.68 m ² |
| Chambre 4 | 15.12 m ² |
| Salle de bain 3 | 6.93 m ² |
| Surface habitable R+2 | 39.96 m² |

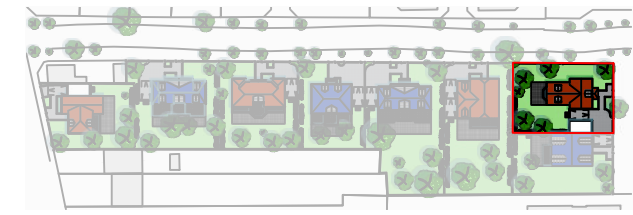


Plan du R+2

Date:
25/01/23
Indice:

Mentions :





Maison 2: 6 pièces



Façade Est (Rue)



Façade Nord (Rue)



Façade Ouest



Façade Sud

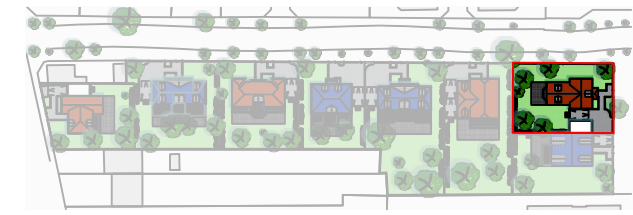
Date:
25/01/23
Indice:

Mentions :



DOMINIQUE
HERTZENBERGER
ARCHITECTE





Maison 2: 6 pièces

